

What is happening?

Our applications will stop supporting SSL protocol for secured connectivity on January 10, 2015. Given that Internet Explorer is the most used browser by users, this will cause troubles to login on Quadrem applications.

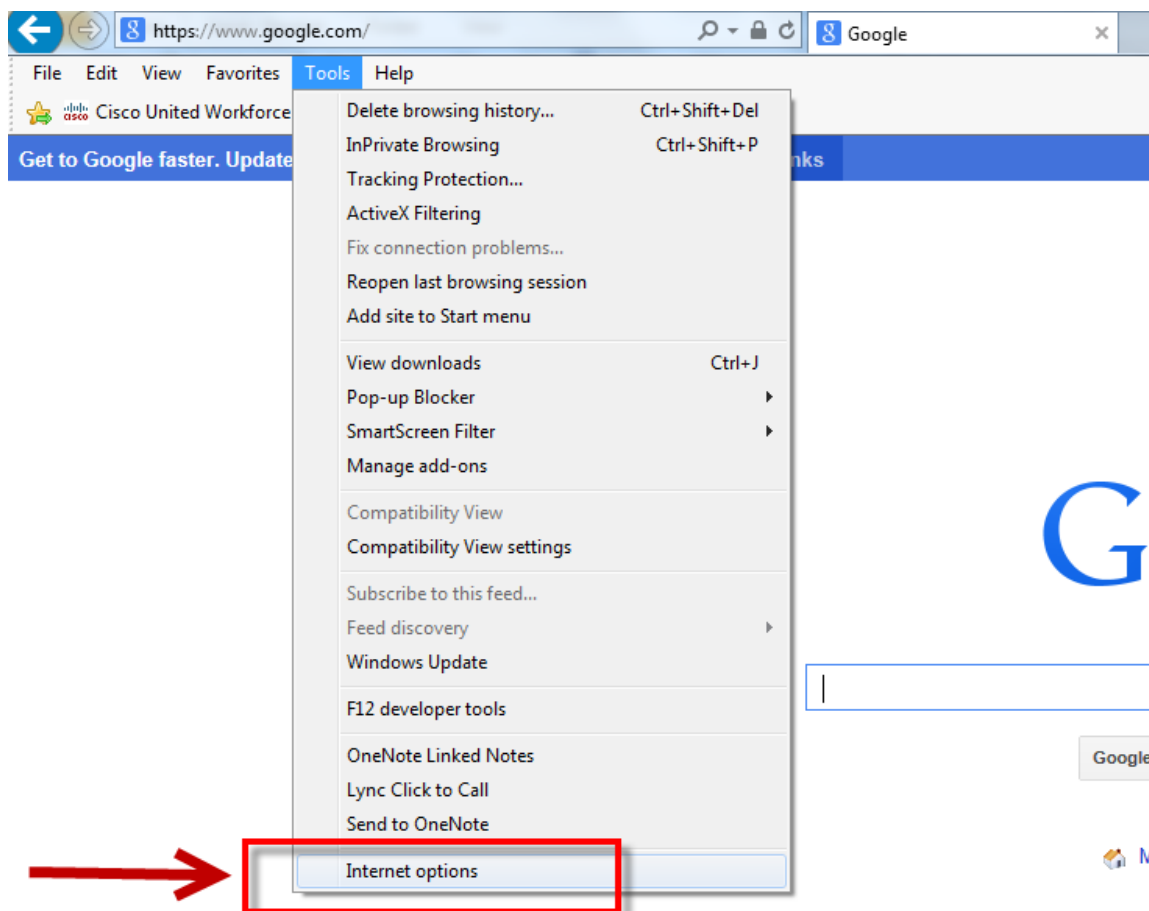
What can I do?

Users can take action and solve this by turning on TLS protocol in any version of Internet Explorer. Remember, this setting will be necessary in order to access any application on the Quadrem Network.

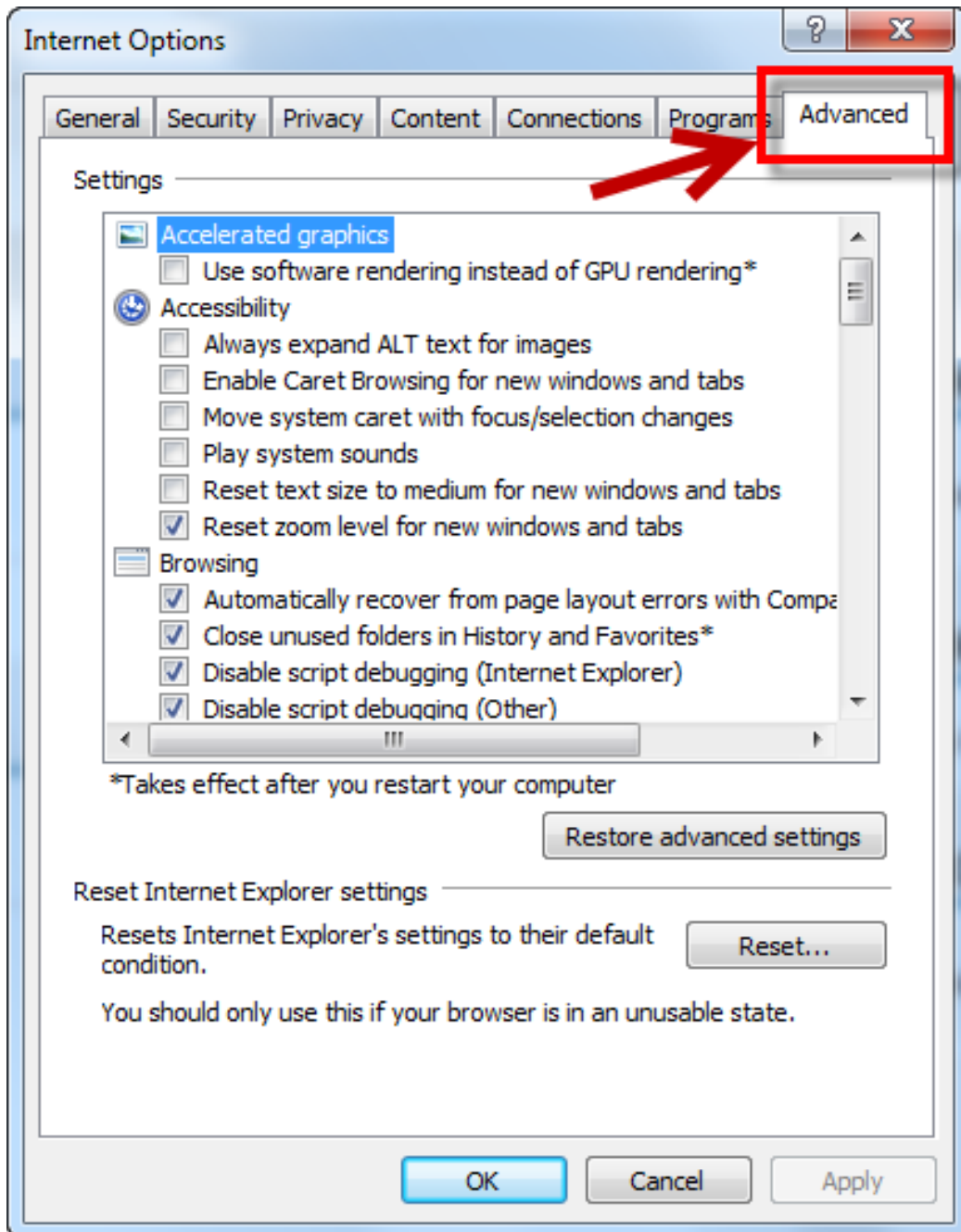
How to enable TLS in Internet Explorer (IE)?

Please follow below instructions to update your settings in your Internet Explorer.

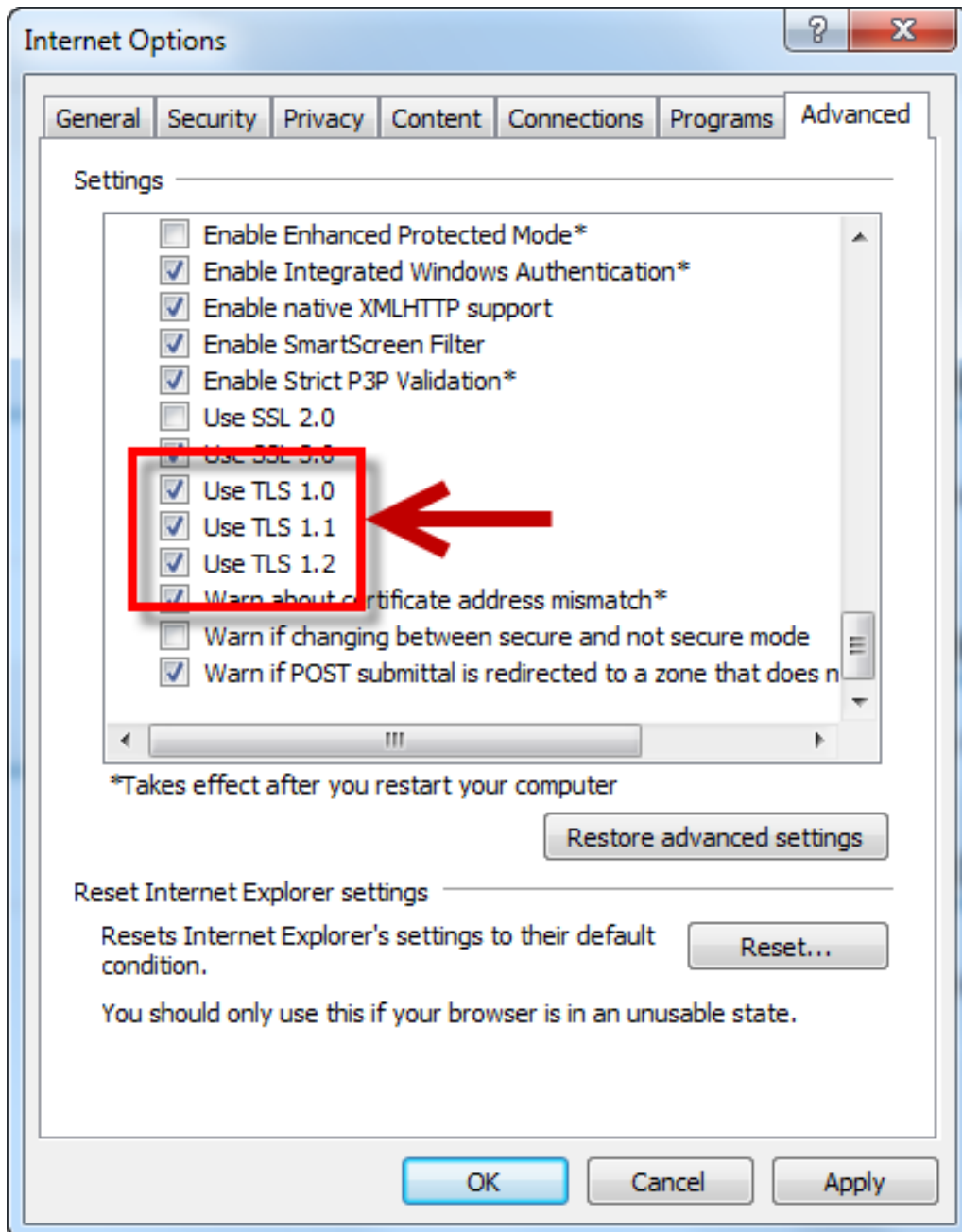
1. Access your browser settings by clicking the Tools menu and selecting “Internet Options”.



2. Click the Advanced tab on the right side of the pop-up window that appears.



3. Scroll down to nearly the bottom of the list. Here you will see three options with checkboxes next to them: **Use TLS 1.0**, **Use TLS 1.1**, and **Use TLS 1.2**. Ensure that all three options are checked.



4. Any further help, you can contact our Global Support [here](#)